



# CCH® TeamMate Audit Management System

CCH® TeamMate is the powerful, award-winning audit management system that has revolutionized the audit process. TeamMate is used by more than 85,000 auditors from more than 2,000 organizations and is the industry standard in Audit Management Systems.

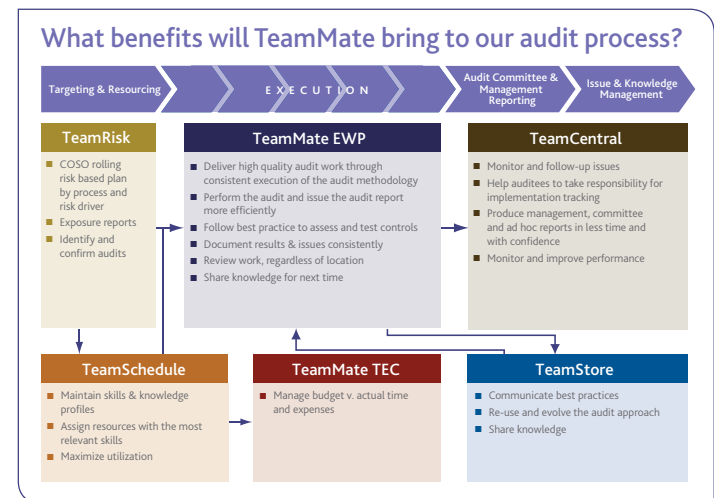
Audit Departments of all sizes are using TeamMate to increase the efficiency and productivity of the entire audit process, including: risk assessment, scheduling, planning, execution, review, report generation, trend analysis, committee reporting and storage.

## Saving Time — Adding Value

- Studies have shown that on average, auditors spend in excess of 40% of their time documenting and reviewing workpapers and preparing their reports.
- TeamMate has been designed as a tool to dramatically reduce time spent on those elements that provide less value. TeamMate empowers users at all levels to spend less time documenting and reviewing, and more time providing value-added services.
- Our users report average productivity increases of 20%—25% in the first year of TeamMate use.
- TeamMate is a complete standalone solution, which runs in most IT environments. TeamMate is completely flexible and configurable, adapting to the way your audit department works without the need for any software modification.

## TeamMate EWP

- TeamMate EWP's unique database set-up and advanced replication feature allow the entire team, regardless of location, to access the audit file simultaneously. Replication allows remote review without interrupting the ongoing audit work.
- TeamMate EWP includes state-of-the-art imaging software.
- TeamMate was designed for use across all business sectors for all types of audits.
- TeamMate EWP's security features include the automatic encryption and compression of all audit data.
- TeamMate EWP has a user-friendly, Windows-based interface that provides simple navigation through any audit file.
- TeamMate's powerful 360° reporting feature facilitates the automatic real-time drafting of issues, findings, work programs and time summaries into preformatted Microsoft® Word documents. TeamMate enables the documents to be sent to management for responses, which can then be imported back into the audit file.

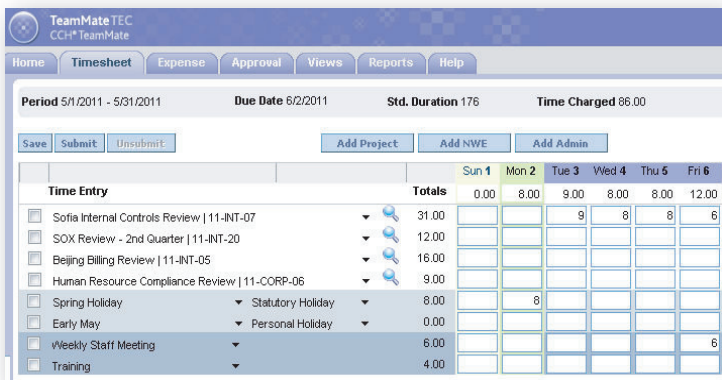


## TeamRisk

- TeamRisk is an advanced risk assessment system that enables you to develop a risk-based audit plan, letting you decide what works best as you design, perform and report your risk assessment.
- Design your risk assessment to mirror your organization. User defined fields make it easy to customize TeamRisk. You control risk weightings and calculations, to align with your own risk assessment methodology.
- Like all TeamMate components, TeamRisk is customizable so that terminology and risk factors used by your department can be incorporated into the tool.
- TeamRisk Web allows you to distribute your risk assessment to members of your audit team and/or to business management to complete. All results are then reviewed and imported into your current assessment.
- Risks and controls identified in TeamRisk are seamlessly carried forward into TeamMate EWP to facilitate testing and reporting.
- Roll forward your previous assessment as a head start to your new risk assessment. You can choose to roll forward only your organizational structure or even risks, controls and assessed values.

### TeamSchedule

- TeamSchedule provides users with the ability to schedule projects and resources in such a way that there is a clear visual demonstration of personnel assignments and tracking of projects in an annual plan.
- TeamSchedule is designed to be flexible enough to work easily for small and large groups by allowing multiple schedulers, resource teams and state-of-the-art Gantt interfaces to display assignments.
- Easy-to-Use Drag'n Drop features allow you to select several resources and projects and with a single drag motion add them to the Gantt.
- Resource views allow you to see unscheduled time and with a simple right-click find projects that are under-assigned to boost resource utilization.



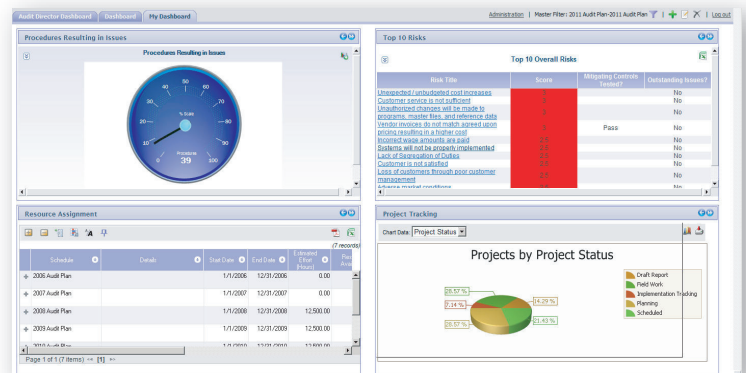
### TeamMate TEC

- TeamMate TEC is a web-based tool that allows auditors to capture and report their project and non-project time and expenses.
- TeamMate TEC is fully integrated with TeamSchedule to populate auditor assignments and events such as vacation to simplify the entry process.
- View the annual plan to determine completeness and drill down to project detail to analyze time and expense variances.

Project Name	April	May
Operational		
Accounts Payable - Operational		
Allied's Incorporation - Operational	850.00 h / 170.00 h	
Chris Ryley	40.00 h	40.00 h
Marlann Kessler - North America	40.00 h	40.00 h
Pamela McCoy - North America	40.00 h	40.00 h
Randy Cowell	40.00 h	40.00 h
Sarah Myers	40.00 h	40.00 h
Human Resource - Operational		
Chris Ryley		350.00 h / 6.00 h
Marlann Kessler - North America		40.00 h
Pamela McCoy - North America		30.00 h
Sarah Myers		40.00 h
Payroll Process R. - Operational	350.00 h / 7.50 h	
David Carr - Europe	40.00 h	40.00 h
Denise Clewlow - Europe	152.00 h	
Holly Hargarten - Europe		80.00 h
Mike Evans - Europe	38.40 h	
SOX Review - Int. - Operational		
Toronto Plant Rev. - Operational		

### TeamCentral

- TeamCentral is a web-based global issues and tracking database that puts key information at your fingertips:
  - Customizable, user-defined dashboards provide views to all your key data with drill-down capabilities to underlying data.
  - Allows easy web-based searching through your department's complete database of key audit data, e.g. issues, reports, plans, risks and controls.
  - Facilitates issue follow-up, trend analysis, prior audit review and committee reporting.
  - Accessible to key stakeholders, allowing management to focus on the overall objectives and management of audit results without the need to look at details.
  - Issue owners can be given access to provide progress updates.
  - Automated e-mails keep the implementation tracking workflow going, reducing the time needed to monitor outstanding audit issues.



TeamCentral Illustration 1 — Customizable dashboards provides insight to the data most important to you with the ability to drill down to underlying details.

Project Code	Issue	Recommendation	Priority	Status	Estimated Date	Revised Date	Actual Date	Original Age	Revised Age
18-INT-04 - Capital Internal Control Review	Obsolete inventory noted during inspection of premises	Proper classification of obsolete inventory	Moderate	Open	9/30/2010			274	
18-CORP-20 - 2nd Quarter SOX Testing	Unlocked Door	Doors should be secure	Low	Open	8/27/2010			281	
18-INT-04 - Capital Internal Control Review	Additions not capitalized	Fixed Assets should be capitalized	Moderate	Open	6/17/2010			280	
18-INT-04 - Capital Internal Control Review	Inventory records not in agreement with physical count	Inventory records should be reconciled	Moderate	Open	10/29/2010	7/28/2011		218	-55
18-INT-04 - Capital Internal Control Review	Inventory records not reconciled	Reconcile inventory accounts	High	Open	9/30/2010	6/30/2011		247	-26
18-INT-01 - SoRa Internal Control Review	Capital assets not inventoried	Capital assets should be physically inventoried	Moderate	Open	6/18/2010	7/28/2010		40	
18-INT-01 - SoRa Internal Control Review	Sufficient record not maintained on assets with third party locations	Fixed assets at third party locations need to have proper statements on file	High	Open	6/18/2010	7/16/2010		30	
18-CORP-22 - External Audit Assistance	Significant adjustment with no supporting documentation	Significant adjustments need supporting documentation	High	Open	6/30/2010	7/22/2010		2	
18-INT-14 - SoRa Internal Audit	Opening and closing bank accounts	Monitor opening of bank accounts	High	Open	3/31/2010	7/30/2010		121	
18-CORP-22 - External Audit Assistance	Book value not identified before acquisition	Book value should have been recorded in financial statements	High	Open	7/30/2010	10/15/2010		309	232
18-CORP-08 - Human Resource - Compliance Review	All contracts should be maintained	All contracts should be maintained	High	Open	8/31/2010	6/19/2011		274	-4
18-CORP-13 - Benefits Process Review	Medical benefits deduction	Medical benefits deduction should be reviewed	High	Open	5/31/2010	9/27/2010		389	358
18-CORP-09 - Human Resource - Compliance Review	Employee background checks	Background checks need to be performed	High	Open	10/4/2010			243	

TeamCentral Illustration 2 — Recommendation aging displaying comparison to both Original and (if applicable) Revised Due dates.

### Contact us

For a demonstration of CCH® TeamMate or to request additional information, please visit [CCHTeamMate.com](http://CCHTeamMate.com)

**ARC Logics™**  
a Wolters Kluwer business  
1-888-830-5559  
[CCHTeamMate.com](http://CCHTeamMate.com)